

## **Library Accessibility Information**

### **UIC Library Synopsis**

After performing an audit on the UIC Library, the library is a spacious environment that is wheelchair accessible. At the entrance from the SCE/Quad side, there is one accessible door. At the Morgan street entrance, there are two accessible doors. On the entrance from the SCE/Quad side, there is one accessible door on the left side of the building. On the Morgan Street entrance, both accessible doors are placed in between the revolving doors and the buttons for these doors are placed on the side of the two pillars placed in front of the accessible doors which may be hard to find. Due to the placement, the entrance may become congested in busy times. When entering the library, there are metal detectors with a threshold. The space within the library is spacious and the floor is smooth. There are many different colors and posters within the library, which can come off as overstimulating for some individuals. There are also no room signs. Finally, the bathrooms have accessible stalls as well as large signs and have roll under counters, which can be accessible for wheelchair users.

# UIC Library Audit

**Note:** Audit was taken on a Thursday morning when there were not many students on campus yet.

## Overview of UIC Library:

After performing an audit on the UIC Library, the library is a spacious environment that is wheelchair accessible. At the entrance from the SCE/Quad side, there is one accessible door. At the Morgan street entrance, there are two accessible doors. On the entrance from the SCE/Quad side, there is one accessible door on the left side of the building. On the Morgan Street entrance, both accessible doors are placed in between the revolving doors and the buttons for these doors are placed on the side of the two pillars placed in front of the accessible doors which may be hard to find. Due to the placement, the entrance may become congested in busy times. When entering the library, there are metal detectors with a threshold. The space within the library is spacious and the floor is smooth. There are many different colors and posters within the library, which can come off as overstimulating for some individuals. There are also no room signs. Finally, the bathrooms have accessible stalls as well as large signs and have roll under counters, which can be accessible for wheelchair users.

## Parking:

- The main parking lot of individuals visiting UIC Library would have to be in front of Student Center East, 750 S Halsted. There is parking on the Morgan Street entrance; however, this seems to only be open to faculty/staff.

## Entrance from SCE:

- When entering the UIC Library from the SCE Entrance, individuals would have to walk through SCE and exit through the set of doors to enter the campus side of UIC. The set of doors on the Halsted street entrance consists of 6 sets of doors: 2 sets are accessible doors located on both the right side and left side of the building with 36 inch accessible bars.
  - **Note:** The right accessible door opens fairly slowly
- After entering these sets of doors, there is another set of doors with the same layout as the first 6 set of doors, and the accessible doors both work smoothly.
- In order to get to the UIC Library, individuals would need to pass through the 4 sets of revolving doors that also include 2 sets of accessible doors on both the right and left side. They would then need to walk straight down, which will then reach the newly renovated Quad. The Quad has a large circular patch of grass in the center that is surrounded by

spacious concrete. As the individual makes their way to the UIC Library, they may encounter some holes and bumps in the concrete.

- **Note:** There was still some construction going on on the side of the quad. The ground where the quad was made is smooth concrete, but surrounding this part, there are holes and bumps in the ground. Additionally, the quad does not have any roofing, which means there will be no covering during the rainy/snowy/hail weather.

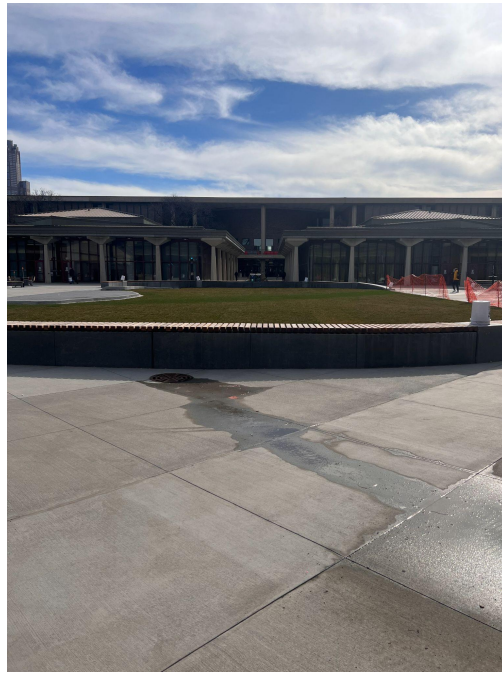


Image Description: (Left) Uneven and cracked concrete alleyway with buildings and polls on either side. A sign in front of an elevated garden is placed within the center of the alleyway. (Right) Wide walkway leading to the Quad. The SCE building is seen far ahead.



Image Description: Very textured and uneven concrete pattern on an alleyway in front of an elevated garden space. Buildings in the background on the top of the image.

## Entrance from Morgan Street (BSB)

- When entering from Morgan Street, there are 4 sets of doors, two revolving and two accessible doors. The revolving doors are placed on the outer sides of the buildings with both accessible doors being placed in between. There are two large pillars in front of the accessible doors with an accessible button on the side of them.
  - **Note:** With large scaled events or busy hours, the area may get congested and may be difficult to access the accessible doors for some individuals. On another note, the accessible doors all opened smoothly and efficiently.
- The sign of the building that states “UIC Library” is placed on the side of one of the pillars and is dull/dark, which may make it challenging to find the Library when it is dark outside.
- Once entering the library from this side of the building, there are metal detectors, with 4 sets of doors: 2 sets of these doors are accessible and placed on the left and right side with 2 sets of opened doors in between.
  - **Note:** At the time of the audit, the only door that was opened was the accessible door on the left side, which can cause congestion during busy hours. On another note, the accessible doors all opened smoothly and efficiently.



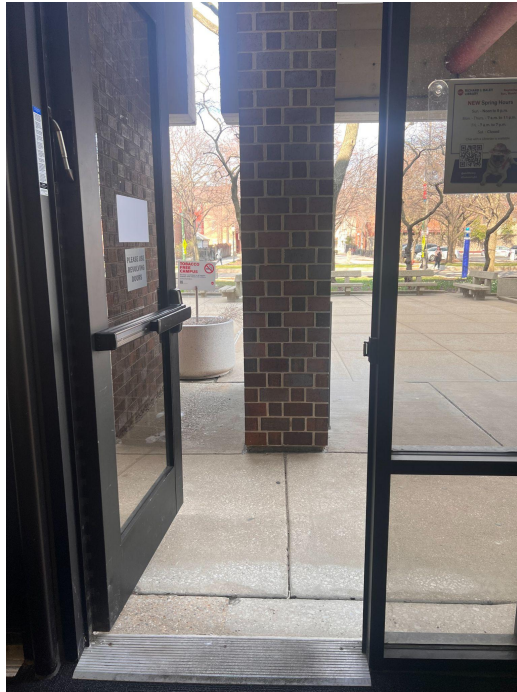


Image Description: (Left) Two brick pillars and a large planter stand in front of a set of doors. (Right) an open accessible door reveals a brick pillar standing four feet from the entrance.



Image Description: (Left) A closed accessible door with an accessible push button propped onto a wall to the right of the image. (Right) A closed accessible door accompanied by an accessible push bar located to the left of the screen onto a brick wall.

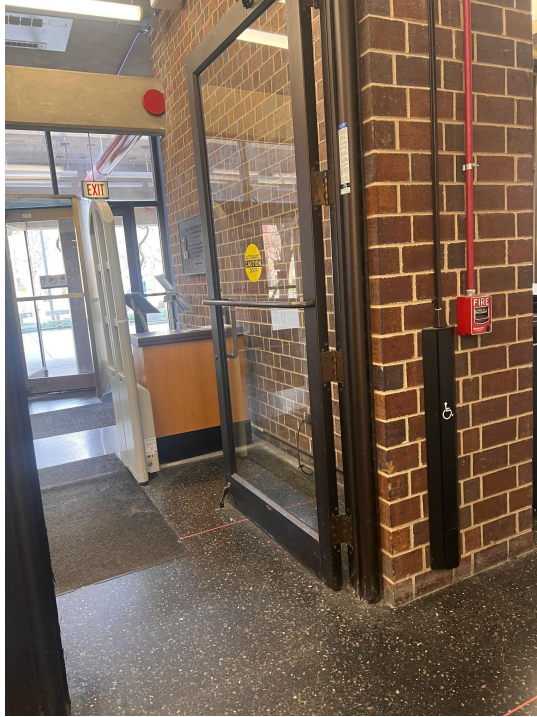


Image description: Accessible door is open leading to a set of metal detectors and a second set of revolving exit doors. Accessibility push button is prompted onto the brick wall beside a fire alarm.

## Library

- The library's entrance has metal detectors with one bump on the ground at each detector. After passing the detector, there are 6 doors that are propped open with one accessible door on the left side. The library opens up with a bright light, and smooth, non-carpeted ground. UIC's Library is spacious and there are many different signs as well as colors being posted all around the library; however there are no signs to distinct what room is which. There was no specific scent or loud signs.
  - **Note:** The description is based off the entrance from SCE/Quad. The library is overall very spacious, even with posters/signs, these were along the sides of the wall and allowed for spacious pathways.





Image Description: Six entrances in total, two sets of doors on either side of two revolving doors. The door furthest to the right is the accessible door with the accessible push button. The concrete ground is textured and cracked.



Image Description: (Left) Accessibility door accompanied by an accessibility button elevated to the left of the image. (Right) 2 paralleled metal detectors standing five feet away from the accessible entrance to the library. Carpeted floor is not leveled with a bump between the two standing detectors.



Image Description: Spacious, wide, leveled, smooth floors of a hallroom. Two large colorful posters on either side of the image along with the set of doors. Seating spaces are placed on either side of the hall. Fluorescent lights rods hang on the ceiling along with two monitors.

## Room 1-470

- In order to enter Room 1-470 from the main SCE entrance, individuals must turn right, go straight down and make a left turn and the room will be in a corner. The room specifically does not have an accessible door. The door is approximately 35 inches wide. The room has a large window in the back and side, which shows carpeted ground. The room number does not offer brail.
  - **Note:** The room was locked this day, so the audit is based off of observations through the window. Additionally, the room was not set up for the event, so the audit does not reflect what the room will be on the day of the event.
  - **Note:** Since there are no signs to figure out where the room is, this can be challenging for some individuals to find, but there are workers individuals can always ask.



Image Description: Dim spacious hall with carpeted floor throughout. Set of paintings hung onto the walls along with sets of chairs stacked onto one another toward the left side of the image.

## Bathroom

- The bathrooms are located right down the hall from Room 1-470, with a large sign saying “Women’s Restroom.” The women’s restroom has an accessible button as well as brail on the sign. The entrance width is approximately 41 inches. Upon entrance, the individual is greeted with a horizontal mirror as well as a rollover low, connecting sink. The sinks are automatic and there are soap dispensers located on both sides of the walls. After turning right, there is a pathway to the different stalls with one accessible stall at the end of the path. The entrance to the accessible stall is about 36 inches wide, and the stall size is about 67” x 100”. There are also two handle bars. In the pathway of the stalls, there is one emergency button.
  - **Note:** The bathroom did not have any specific scent and there was fluorescent lighting. Additionally, the men’s bathroom was located right outside the women’s bathroom; however, the audit does not include the descriptions in the men’s restroom.





Image Description: (Left) Sign reads “Women’s Restroom” hung from the ceiling. (Right) Women’s restroom sign, accessible with braille, posted beside the entrance, accompanied by the accessibility push button below it.



Image Description: (Left) Women’s bathroom exit, accessibility push button hung on the tiled wall beside a lightswitch and hand sanitizer dispenser near the exit. (Right) Towel dispenser, drier, and soap dispenser hung on a tiled wall beside a sink.



Image Description: (Left) A floating three compartment sink in front of a large mirror, leveled above tiled floors. (Right) Entrance to the accessibility bathroom made of tiled walls and floors. Emergency call button hung to the right of the screen outside the stall. A pull bar, toilet paper dispenser, and trash bin are hung within the stall beside a toilet.



Image Description: (Left) Toilet placed between two pull bars on either side. To the right of the toilet a toilet paper dispenser, and trash bin are propped above the pull bar. The walls and floors are tiled. (Right) Emergency phone and button hung onto a tiled wall.



## Images



Image Description: (Left) Two brick pillars and a large planter stand in front of a set of doors. (Right) an open accessible door reveals a brick pillar standing four feet from the entrance.



Image Description: (Left) A closed accessible door with an accessible push button propped onto a wall to the right of the image. (Right) A closed accessible door accompanied by an accessible push bar located to the left of the screen onto a brick wall.

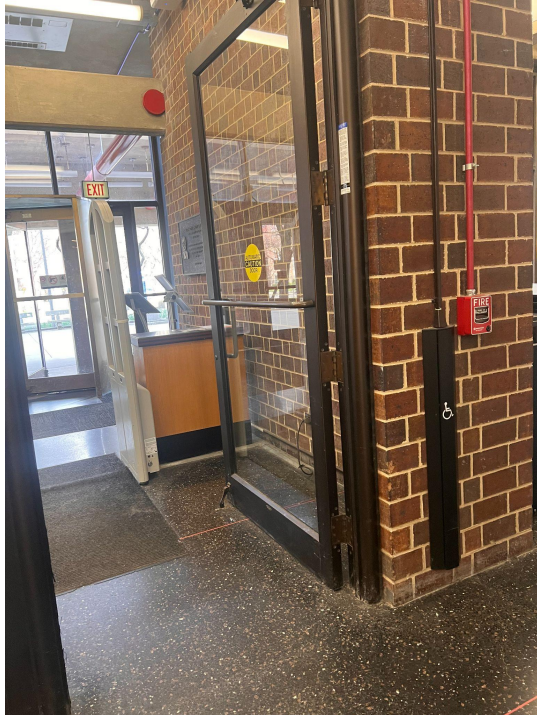


Image description: Accessible door is open leading to a set of metal detectors and a second set of revolving exit doors. Accessibility push button is prompted onto the brick wall beside a fire alarm.



Image Description: Six entrances in total, two sets of doors on either side of two revolving doors. The door furthest to the right is the accessible door with the accessible push button. The concrete ground is textured and cracked.





Image Description: (Left) Accessibility door accompanied by an accessibility button elevated to the left of the image. (Right) 2 paralleled metal detectors standing five feet away from the accessible entrance to the library. Carpeted floor is not leveled with a bump between the two standing detectors.



Image Description: Spacious, wide, leveled, smooth floors of a hall. Two large colorful posters on either side of the image along with the set of doors. Seating spaces are placed on either side of the hall. Fluorescent lights rods hang on the ceiling along with two monitors.



Image Description: Dim spacious hall with carpeted floor throughout. Set of paintings hung onto the walls along with sets of chairs stacked onto one another toward the left side of the image.



Image Description: (Left) Sign reads “Women’s Restroom” hung from the ceiling. (Right) Women’s restroom sign, accessible with braille, posted beside the entrance, accompanied by the accessibility push button below it.





Image Description: (Left) Women's bathroom exit, accessibility push button hung on the tiled wall beside a lightswitch and hand sanitizer dispenser near the exit. (Right) Towel dispenser, drier, and soap dispenser hung on a tiled wall beside a sink.



Image Description: (Left) A floating three compartment sink in front of a large mirror, leveled above tiled floors. (Right) Entrance to the accessibility bathroom made of tiled walls and floors. Emergency call button hung to the right of the screen outside the stall. A pull bar, toilet paper dispenser, and trash bin are hung within the stall beside a toilet.



Image Description: (Left) Toilet placed between two pull bars on either side. To the right of the toilet a toilet paper dispenser, and trash bin are propped above the pull bar. The walls and floors are tiled. (Right) Emergency phone and button hung onto a tiled wall.

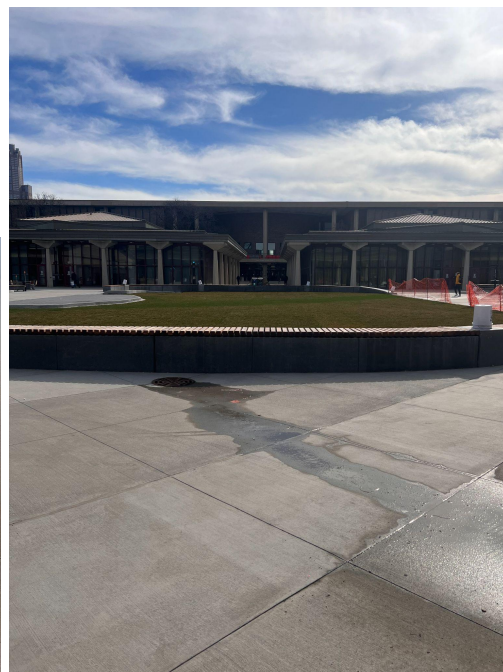


Image Description: (Left) Uneven and cracked concrete alleyway with buildings and polls on either side. A sign in front of an elevated garden is placed within the center of the alleyway. (Right) Wide walkway leading to the Quad. The SCE building is seen far ahead.



Image Description: Very textured and uneven concrete pattern on an alleyway in front of an elevated garden space. Buildings in the background on the top of the image.